

Hood Type Dishwasher

■ WD-6



Wexiödisk^W
BECAUSE WE DO CARE



Our history – cleaning up!

Wexiödisk started up in 1972

Wexiödisk is a Swedish company founded in 1972, which ever since it opened for business has focused on offering the institutional catering sector the very best in dishwashers. The extraordinarily high quality and new innovations soon meant successful sales results, even outside Sweden.

Quality

The ambition for all our customers to be satisfied has been our ethos right from the very beginning. So we have focused on being able to provide reliable machines with low operating costs and a good working environment rather than a low purchase price, i.e. an early focus on Life Cycle Cost. Excellent cleaning results have always been seen as a matter of course.

Partners

We have selected our partners for the distribution, sales and service of our products with great care. We are in close contact with them, provide product support and training and ensure that we meet the customer's expectations together. Today Wexiödisk is the market leader in Scandinavia with a distribution network covering not only Europe but also, for example, Japan and Australia. In recent years Wexiödisk has also won several prestigious contracts within flight catering, which is a customer group with extremely high requirements.

Products

We will continue to invest significantly in product development in order to maintain and develop customer value via a technologically advanced and competitive range of products. To assist us we have well-trained staff and hi-tech facilities. A complete production line, from plate-working to trial runs and equipped with automatic workshop machinery and robots, ensures top quality and availability.

Thinking about the environment

Dishwashers consume large amounts of energy, water and chemicals. So in recent years, Wexiödisk has concentrated more on the environment, which has led to the development of several new and unique products. ICS+ and DUPLUS are the names of two patented principles that exceptionally reduced environmental impact and considerably lower operating costs.

Everyday life

Wexiödisk is based in Växjö in the south of Sweden. We have a working space of approx. 11,000 m² at our disposal and we have about 175 people working for us.

Our ambition

Every installation must result in a good reference!



■ WD-6 A safe choice

Never before has it been easier to wash dishes than with Wexiödisk's WD-6 hood dishwasher. Its robust basic design, which makes use of the best components and materials, guarantees reliable operation for many years to come. When this is combined with Swedish engineering for top performance and ease of use, the result is a unique machine which can meet even the most challenging requirements.

Ease of use

The WD-6 is very easy to use. The unique hood concept and the new Auto-Start function have improved the ergonomics of the machine and significantly simplified the wash process. Simply slide in the basket, the hood closes automatically and the machine starts. When the wash programme finishes, the hood opens automatically and allows the steam to escape at the back of the machine. The washed items begin to dry immediately and the machine is ready to wash the next basket. It really couldn't be simpler!

As an alternative to the Auto-Start model, the machine is also available with an automatic hood, which is activated using a push button on the control panel, or a manual hood.

Excellent working environment

The WD-6 has a series of technical features aimed at improving the working environment for operators in the dishwashing room. The automatic hood meets strict ergonomic standards and reduces the risk of operators suffering shoulder or arm strain injuries. During the opening phase, the cleverly designed hood directs the steam upwards behind the machine and not into the operator's face. To improve the working environment further, the WD-6 can be supplied with a steam hood or a condensing unit with heat recovery.

A fantastic new day – everyday

If you want the best, in the form of a high-quality dishwasher which makes work easier for your employees, the WD-6 is the obvious choice. Ease of use, a good working environment, high levels of hygiene, easy servicing and optimum washing results make the WD-6 one of the best dishwashers on the market. The machine also has a number of programmes which can be individually adapted, allowing it to meet all the different washing requirements that may arise in a kitchen.



Simple diagnostics

An electronic control system monitors the washing process and ensures that pre-set parameters, including hygiene and environmental requirements, are met. Extended HACCP (Hazard Analysis Critical Control Point) monitoring is available as an option. This system stores statistics, including the time at which events took place, relating to the machine's various parameters during each washing cycle.

This makes the machine easier to operate, helps to keep costs to a minimum and saves valuable time in the kitchen.



Optimum washing results and high levels of hygiene

The large washing tank and efficient filters keep the washing water clean longer and allow for long washing sessions between water changes. Powerful washing pressure and a design which prevents the nozzles becoming blocked ensures excellent washing results. To improve the quality of the final rinse and the hygiene levels, the washing water drains out of the washing arms at the start of the rinse phase. This prevents any residual washing water from dripping out of the top washing arm onto the clean items. It is important that no washing water remains in the machine while it is not in use. The washing pump is designed to drain fully when the machine empties.

The control system monitors all the functions during the washing process. The machine also has an automatic cleaning programme. Smooth surfaces and rounded corners on the inside of the machine, together with a specially designed basket conveyor with fixed positioning, make the process even more efficient.

Easy servicing

In order to allow any faults to be resolved quickly and efficiently, the machine has an event log which records all the alarms and any changes made to the machine. This helps to ensure rapid troubleshooting and improved diagnostics.

As in all Wexiödisk machines, the components are carefully positioned to allow easy access for servicing from the front of the machine. This, together with high quality materials and stainless steel internal piping, make the WD-6 a unique machine.

■ Robust and reliable

- **Ease of use** – with Auto-Start *
- **A good working environment**
– with the unique hood concept
- **High levels of hygiene** – with an automatic cleaning programme
- **Time savings** – with electronic monitoring and diagnostics
- **Easy servicing** – the machine can normally be serviced from the front
- **Excellent wash results** – with self-draining washing arms



The deep tank, which reduces the risk of foam forming, is one of the many features that help to ensure good washing results.



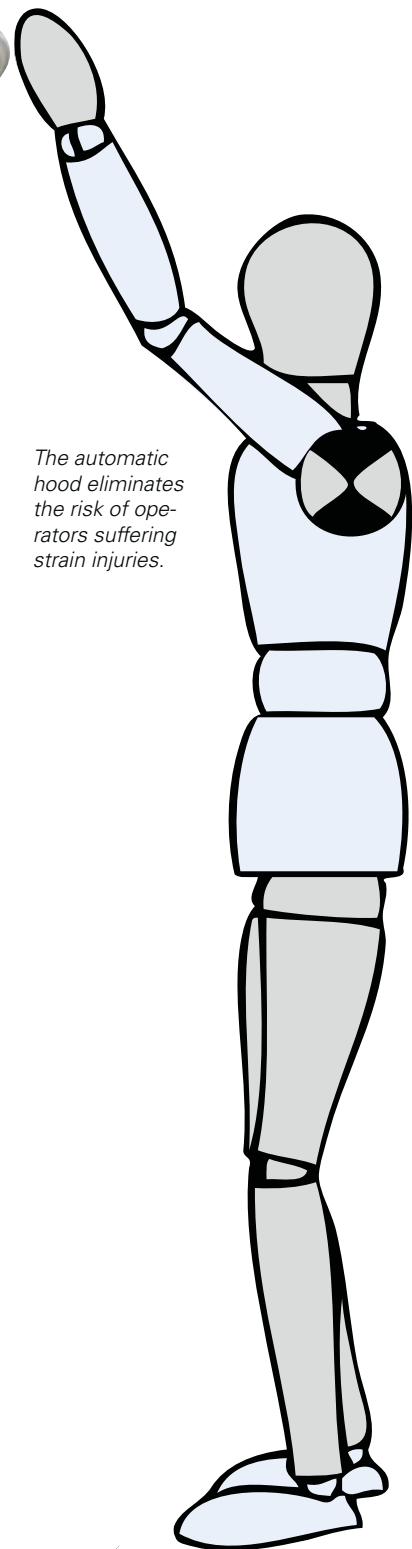
The concave design of the nozzles on the washing arms prevents them from becoming blocked using tried-and-tested technology.

*Reliable and easily serviced automatic hood.**

*The shelf for storing chemicals improves the working environment and makes cleaning easier.**



** Option*



The automatic hood eliminates the risk of operators suffering strain injuries.



The unique hood opening mechanism ensures that the hood opens at the back, so that steam can escape at the back of the machine and not into the operator's face.



To achieve a good working environment in the dishwashing room a steam hood is available as an accessory. Automatic exhaust fan is standard equipment.



The design of the fixed basket conveyor helps to improve the washing results even further by ensuring that the water jets can easily reach every corner of the basket. Smooth internal surfaces make cleaning easier.



The machine has three washing programmes which can be adapted to meet your requirements. The display shows the selected programme, the remaining washing time, the wash and rinse temperatures and any error messages.



WEB Tool for WD-6 is an option that simplifies the everyday work for you that makes HACCP reports by hand. Using an ordinary Internet browser like Internet Explorer you create your HACCP documentation directly from the machine. From now on no one needs to keep a manual log of temperatures to fulfil and satisfy current hygiene requirements, in accordance with HACCP. Say goodbye to unnecessary paperwork, saving valuable time in the kitchen.

Technical data

Technical data	WD-6C	WD-6
Wash pump (kW)	0.9	0.9
Booster heater (kW)	9	9/12*
Heater tank (kW)	1.8	1.8
Tank volume (litres)	50	50
Weight, machine in operation (kg)	150/160**	160
Degree of protection (IP)	45	45

* 12 kW booster heater is optional

** Machine with insulated hood

Capacity and operation data	WD-6C	WD-6
Total time/wash program 1 (min)	1.5	1.2**
Total time/wash program 2 (min)	-	1.7**
Total time/wash program 3 (min)	-	3.2**
Capacity, max (baskets/h)	35	50
Water consumption rinse/program (litres)	4	2.5-4****
Energy consumption (kWh of connected power)	70-90%	70-90%
Sound level* (dB(A))	64 / 61***	61

* Measured 1 metre from the machine

** Factory setting. The wash time is adjustable

*** Machine with insulated hood

**** Applies under ideal conditions. The water consumption depends on local conditions. An exact adjustment is made during installation.

Connection, machine	WD-6C	WD-6
Total connected power (kW)	9.9	9.9/12.9*
Main fuse 400V 3N~ (A)**	16	16/20*
Max connection area 400V 3N~(L1-L3, N, PE) Cu (mm2)***	2.5	2.5

* 12 kW booster heater is optional

** Other voltages on request

*** Cabel 2.5m H07RN-F included

Connection water, drain and ventilation	WD-6C	WD-6
Water quality, hardness (°dH)	2-7	2-7
Hot water conn. 55-70°C (external thread)*	R ½"	R ½"
Drain connection, PP pipe (ø mm)	50	50
Water capacity warm water, pressure (kPa)	180**	180**
Water capacity warm water, flow (litres/min)	18	18
Water capacity warm water hood lift, pressure (kPa)	-	300**
Floor drain, capacity (litres/sec).	3	3
Ventilation of the machine (m³/h)	600	600

* If lower water temperature a 12 kW booster heater is recommended.

* If pressure / flow is lower the machine should be equipped with a booster pump.

Size and weight for transportation	WD-6C	WD-6
Size LxWxH (mm) *	765x710x1560	765x710x1560
Weight (kg) *	105 / 115**	115

* Packaging included

** Machine with insulated hood

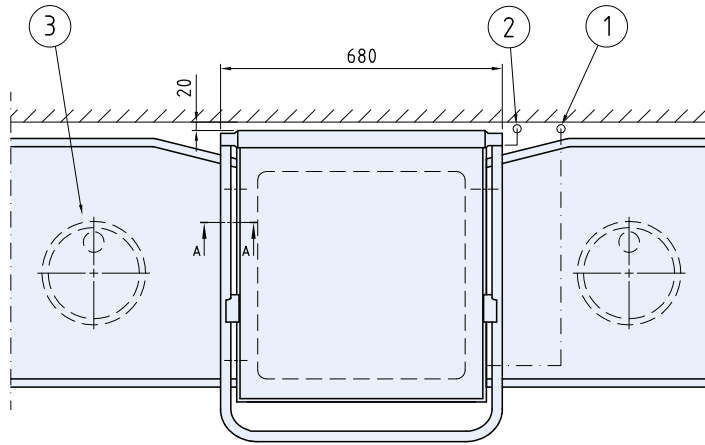
Models

	Part no.	Dimensions in mm DxWxH	Booster heater	Electrical connection
Model WD-6C	203-06C...	657x600x1430/1875	9 kW	400V 3N~ 50Hz 9,9 kW 16A
Options				
Insulated				
230V/3/50Hz				
Detergent dispenser for liquid detergent				
Extra equipment				
Connection pipe with non-return valve, re-suction protection and shut-off cock	203-0672			
Steam hood with suction connection ø 160 mm	203-0630			
Right-hand side shelf for chemical storage	203-0663			
Left-hand side shelf for chemical storage	203-0664			
Model WD-6	203-006...	657x600x1430/1875	9 kW	400V 3N~ 50Hz 9,9 kW 16A
Options				
Automatic hood				
Autostart for automatic hood				
230V/3/50Hz				
Marine version 400V/3/50Hz without zero				
Marine version 440V/3/60Hz without zero				
Detergent dispenser for liquid detergent				
Panel on left side				
Built-in cupboard for chemical storage				
Booster heater 12kW for cold water conn.			12 kW	400V 3N~ 50Hz 12,9 kW 20A
Booster pump				
Drain pump				
Break tank				
WEB Tool				
Extra equipment				
Condensing unit with heat recovery by the exhausted steam.* Heat exchanger or 12 kW booster heater are recommended. Only in combination with automatic hood. The dishwasher is connected to cold water	203-0640			
Heat exchanger with heat recovery by the drain water.* The dishwasher is connected to cold water.	203-0650			
Steam hood with suction connection ø 160 mm	203-0630			
Connection pipe with non-return valve, re-suction protection and shut-off cock.	203-0672			
Dual control for automatic hood	203-0668			
Right-hand side shelf for chemical storage	203-0663			
Left-hand side shelf for chemical storage	203-0664			

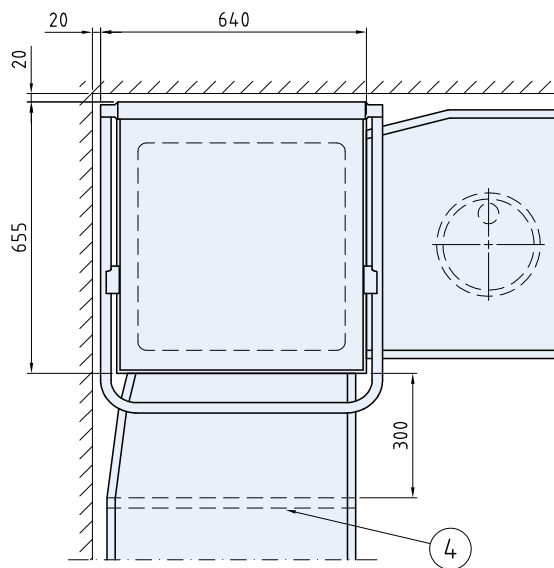
* Data about the heat recovery systems, see separate brochure.

Connection

Straight feed

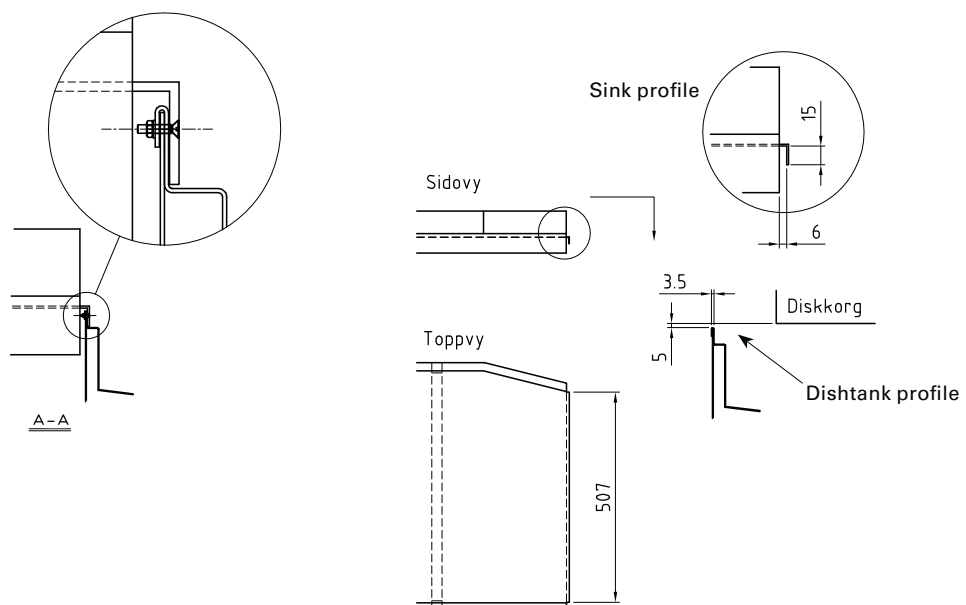


Corner feed

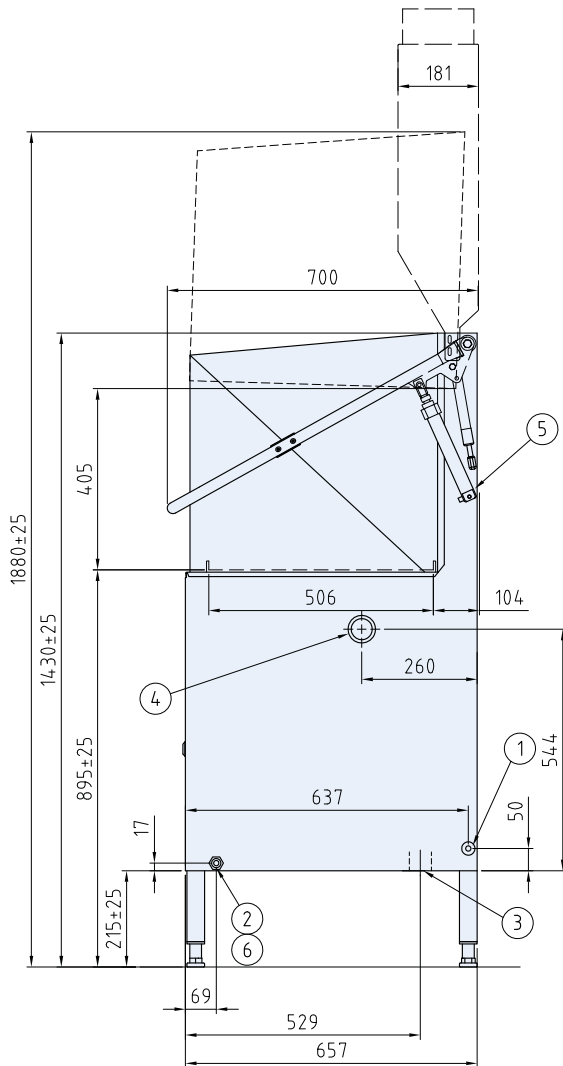


1. Hot water connection
2. Electrical connection
3. Floor drain. Capacity 3l/sec
4. Legs. Must be placed a minimum of 300 mm in front of the machine

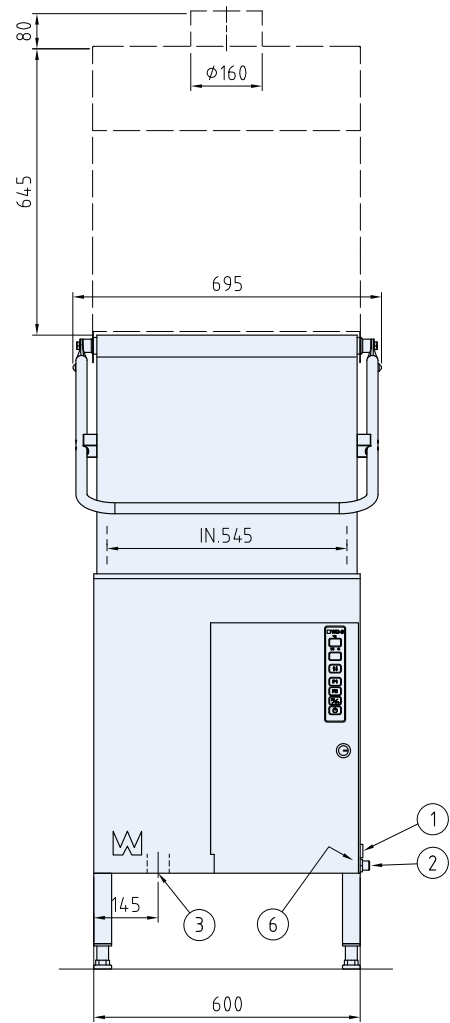
Sink connection



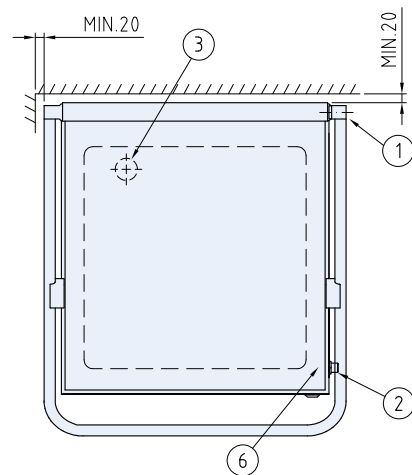
Dimensional drawings



Steam hood
(option)



1. Electrical connection
2. Hot water connection R $\frac{1}{2}$
3. Drain connection, diameter 50 mm, 3l/sec
4. Plugged hole for detergent hose
5. Bleed screw for the lifting cylinder
6. Water outlet for detergent



BECAUSE WE DO CARE



Aishwarya Consolidates Pvt. Ltd.,

#19, Frist Floor, 10th 'B' Main, 27th Cross,
Third Block Jayanagar, BANGALORE – 560 011, INDIA

Tel: +91-80-2664 1200/1/2 Fax: +91-80-2664 1204

E-mail : aishtek@vsnl.com www.aishwaryaconsolidates.com